

Specifications

		KUBOTA	
Model		Z412KW-48-AU	Z422KW-54-AU
Engine	Model	GH7302V	GH7301V
	Type	Air cooled 2 cylinders Petrol engine	
	Engine Gross power	HP	24.0
	Total displacement	cc	726
	Starting system	Key switch	
Dimensions	Overall length	mm	2055
	Overall width	w/ mower mm	1552
		w/o mower mm	1236
		w/ ROPS (upright) mm	1772
	Overall height	w/o ROPS (folded) mm	1265
		mm	1255
Wheelbase			944
Tread/Tyre	Tread	Front mm	1000
		Rear mm	13 x 6.5 – 6, Smooth pneumatic
	Tire size	Front tire mm	24 x 9.5 –14, Low profile tyre
		Rear tire mm	
Weight (w/ mower)		kg	410
Transmission			Hydro-Gear® Commercial ZT3600®
Transmission system			2-HST w/Gear reduction
Speed control			2-hand lever
Travelling speed range	Forward	km/h	0 – 16.0
	Reverse	km/h	0 – 8.0
Braking system			Cog style parking lock / Foot pedal
PTO	Type		Belt drive
	Clutch type		Electric clutch
	PTO brake		Dry disc
Mower deck	Model	RCK48P-400Z	RCK54P-400Z
	Mower deck type		Side discharge
	Mower lift system		Mechanical / Foot pedal
	Deck depth	mm	127
	Belt type		Belt drive
	Deck steel thickness	mm	3.4
	Anti scalp roller		Rigid
	Cutting width of mower	mm	1219
	Number of blades		3
	Cutting height	mm	38 – 127
	Mounting system of mower		Parallel linkage
	Blade tip speed	FPM	18800
Seat			Deluxe seat w/3 inch stroke suspension
Engine stop system			Key stop
Fuel tank capacity		ℓ	25.7
Battery			U1 (12V, RC : 45min, CCA : 300, CA : 410)
Generator capacity		Amp	15A
Hour meter			Standard
Fuel gauge			Sight window

*These Kawasaki engines have been tested in accordance with SAE J1995, verified by TÜV Rheinland Group, and certified by SAE International. The gross power ratings of these engines were determined by using measurements according to SAE J1995 which were witnessed by SAE-approved witnesses from TÜV Rheinland Group. Torque ratings of these engines were not certified by SAE. Actual power and torque output will vary depending on numerous factors, including, but not limited to, the operating speed of the engine in application, environmental conditions, maintenance, and other variables.
**Power (hp) specifications for individual gasoline engine models are rated pursuant to Society of Automotive Engineers (SAE) J1940 or J2723 based on gross output testing performed in accordance with SAE J1995 without the air cleaner and muffler. Gross engine hp will be higher than actual engine power which is affected by accessories, application, engine speed, ambient operating conditions and other factors. The gross engine horsepower information is for comparison purposes only.

Attachment & Option Kit



• **Grass Catcher**
The optional 7 bushels (250 liters) grass catcher can be attached and detached without ever requiring the use of any tools.



- **Mulching Kit**
- **LED Work Lights**
- **OCDC**
- **Maintenance Lift Kit**



©2020 Kubota Corporation

Kubota Australia Pty Ltd

25-29 Permas Way, Truganina VIC, 3029 Australia
Freecall: 1800-334-653
Email: sales@kubota.com.au

Web Site: <http://www.kubota.com.au>

Kubota New Zealand Limited

433 Rangitikei Street, Cloverlea, Palmerston North, 4412 New Zealand
Freecall: 0800-582-682
Email: sales@kubota.com.au

Web Site: <http://www.kubota.co.nz>



Kubota
Genuine Parts
for maximum performance, durability and safety



For Earth, For Life



KUBOTA ZERO-TURN MOWER Z400 Series

Designed for the residential user seeking high levels of comfort and convenience, and the professional user demanding superior durability and performance.



*This information is sourced from overseas and may not necessarily apply locally. It is essential that you confirm specifications and other information with your local Kubota dealer.



Z400 Series

Comfort and Convenience, durability and performance. It's everything you want in a zero-turn mower.

Residential users require high levels of comfort and convenience. Professional users demand superior durability and performance. Both want easy operation and top level performance to handle even the most challenging mowing tasks. The Z400 Series of zero-turn mowers delivers all that and more, including powerful engines matched with rugged transmissions, smooth operation levers, and, of course, Kubota's reputation for outstanding quality and durability.



COMFORT & CONVENIENCE

Designed for performance, the Z400 Series also offers a wealth of comfort and convenience features to keep you feeling fresh and working longer.

NEW HIGH BACK 3" SUSPENSION SEAT

Soft and roomy, the high back 3" suspension seat will keep you comfortable even on those extra-long mowing jobs. The seat slides a full 4" travel, letting you find just the right position for maximum personal comfort.

NEW



WIDE FOOT PAN

There's plenty of legroom up front, thanks to a wide foot pan. It also makes entry and exit a snap.

CUP HOLDER

Integrated cup holder ensures that your drink is always handy, so you can stay on the job longer between breaks.

SMOOTH OPERATION LEVERS

The operation load of the dual operation levers can be adjusted to each operator's needs to provide smooth, precise control and less fatigue at the end of the day. The damper force can be easily adjusted to ensure optimum comfort for every operator.

12V POWER OUTLET

Charge your phone or other accessory while mowing the lawn. The Z400 also has an integrated smart phone holder.

LARGE FUEL TANK

The large, 25.7 L fuel tank keeps the Z400 Series mowing for more than 6 hours between refueling stops. (depending on conditions)

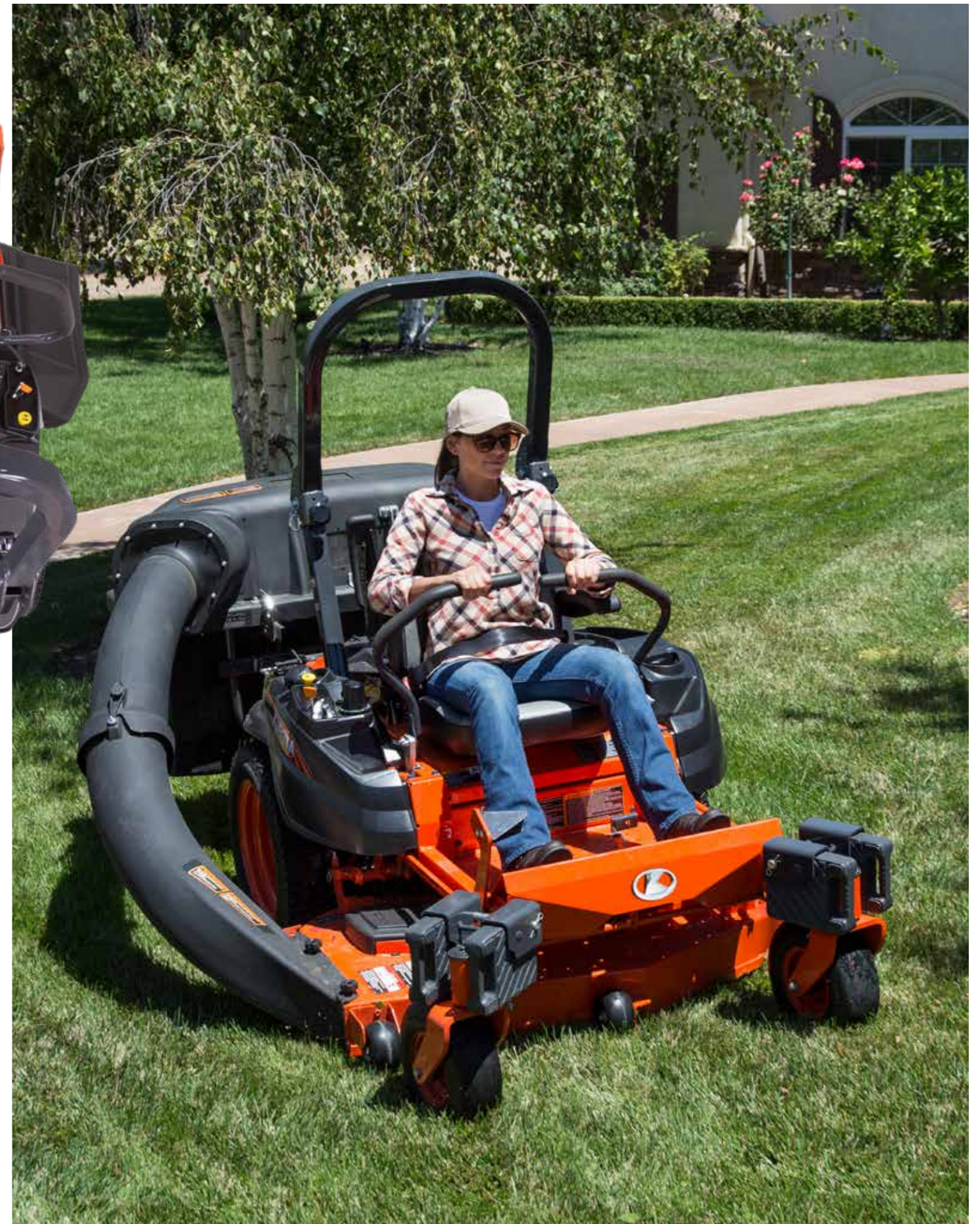
ERGONOMIC CONTROL LAYOUT

All controls are ergonomically arranged for quick identification and simple operation, with most controls on the right side for faster, easier access.



5" DEEP WELDED MOWER DECK

This steel welded mower deck provides outstanding, professional-level cutting performance. A reinforced spindle mount area improves durability.



PERFORMANCE & EASY OPERATION

The Z400 Series boasts the kind of performance found only in commercial-grade mowers, as well as the easy operation that residential and professional users alike can appreciate.

24" Rear Tires
Big tires mean a softer ride.

6.5" WIDE FRONT TIRE

Add some stability when drive over rough to rain. It spread the weight for less damaging to the turf and give better cut quality.



NEW

PARKING BRAKE

A foot pedal locks the brake so the unit can't move, ensuring safe and secure parking.



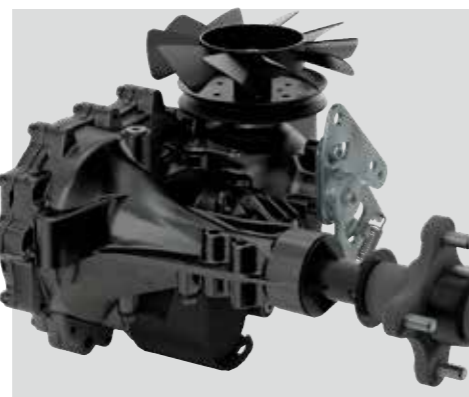
POWERFUL ENGINES

The Z400 Series comes equipped with powerful KAWASAKI engines that provide the torque you need to power through tall grass and rugged environments.



RUGGED TRANSMISSION

Power from the engine is delivered to the wheels through rugged, Hydro-Gear® Commercial ZT3600® transmission.



PRECISION ADJUSTMENT

A simple twist of a dial lets you adjust the cutting height in precise 1/4" increments.

LOW PROFILE TYRE

The Z400 Series' new wide low-profile tyres not only look good, they provide better traction for all types of mowing tasks. They also have a larger footprint that reduces ground compaction as well as turf damage during turns.

FOLDABLE ROPS

The ROPS on the Z400 Series mowers meets ISO 21299 specifications to ensure safe and efficient operation. The ROPS easily folds down to allow the mower to pass under low obstructions, as well as permits easier storage in a garage or shed.

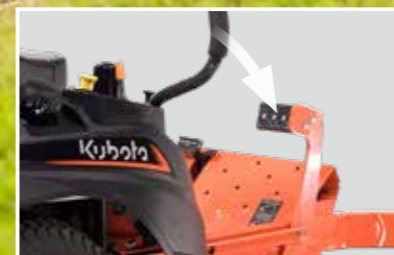
16.0 km/h TRAVEL SPEED



K-LIFT

Mechanical One Push Deck Lift Pedal

The K-Lift pedal lets you quickly and easily adjust the cutting height without leaving your seat. Simply press the pedal and turn the adjustment dial!



1 Push and release the pedal to raise the deck



2 Use the dial to adjust the cutting height



3 Push and release the pedal again to lower the deck