

DZ30 6-WAY DOZER BLADES



AVAILABLE FOR: SSV65 / SSV75 / SVL65-2 / SVL75-2 / SVL95-2s

- 3/8" Moldboard w/full boxed bracing
- 3/4" x 8" Reversible cutting edge - 3 piece design
- 3" Pivot pins
- 3-1/2" x 8" Welded cylinders
- 1/2" x 4" Full length wear bar

This heavy-duty Dozer Blade is well-suited for contractors or landowners who are preparing rough grade, moving material around the job site, pushing silage or manure, or cutting or clearing ditches.



Hydraulic adjustment provides for quick and easy blade positioning and adjusts 6-ways to meet operator needs.

The bubble gauge helps the operator level the blade to ensure a level cut.

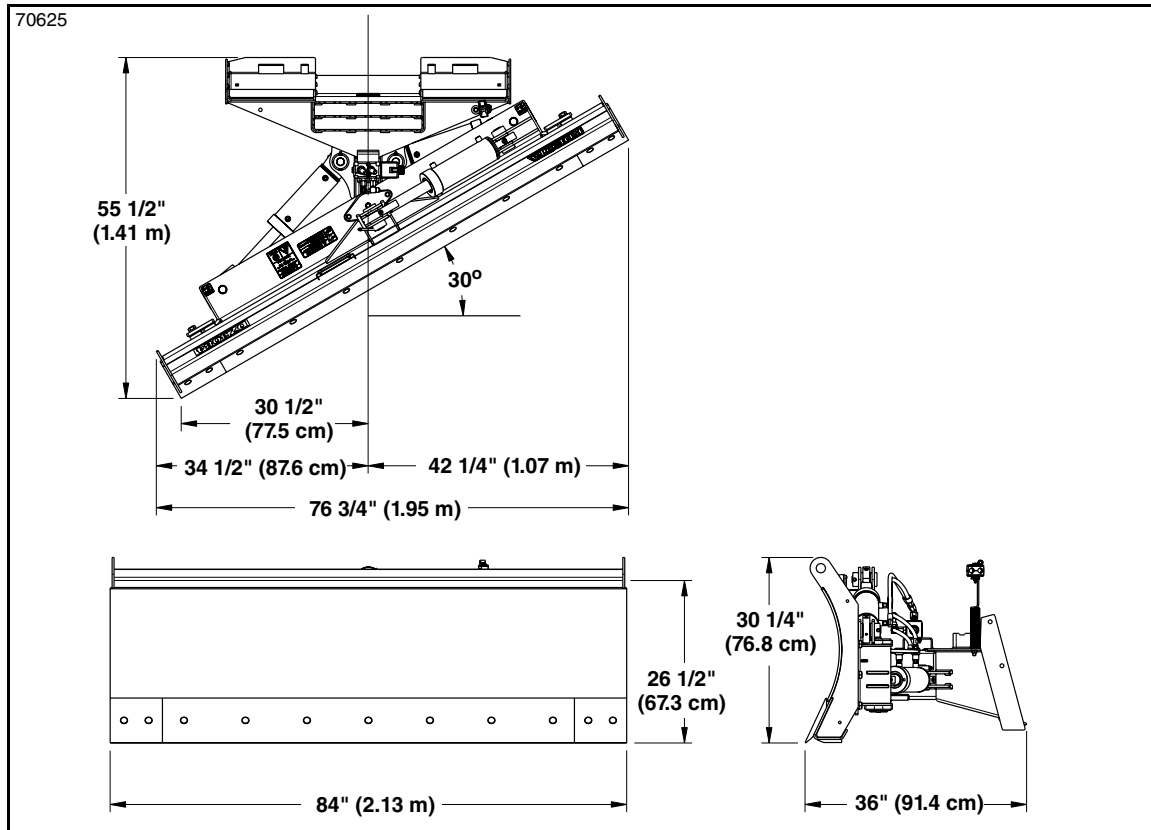


		DZ3084	DZ096
Working Width	Straight Across (m)	84" (2.13)	96" (2.4)
	At 30° Angle (m)	72-3/4" (1.85)	83-1/4" (2.1)
Weight (kg)		1,345 lbs (610)	1,440 lbs (653)
6-Way Blade Adjustment		Top of hitch plate tilts forward or backward. Blade angles left or right. Blade tilts clockwise or counterclockwise.	
Max. Blade Angle		30° Left and 30° Right	
Max. Blade Tilt		10° Clockwise and counterclockwise	
Cylinder Size (cm)		3-1/2" (8.9) Bore x 8" (20) stroke	
Max. Hydraulic Pressure (MPa)		3,500 psi (24.13)	
Moldboard Thickness (mm)		3/8" (10)	
Moldboard Height (cm)		26-1/2" (67.3)	
Pivot Bushings		Replaceable and greaseable, hardened spring bushings	
Pivot Pin Sizes		Angle pin: 3" x 11"-5/8" lg. Pivot pin: 3" x 2-13/16" lg.	
Cutting Edges (cm)	End (cm)	3/4" x 8" x 8-1/2" (1.9x20.3x21.6)	
	Center (cm)	3/4" x 8" x 66" (1.9x20.3x1.68)	3/4" x 8" x 78" (1.9x20.3x1.98)
	Wear Edge (cm)	1/2" x 4" x 84" (1.3x10.2x2.13)	1/2" x 4" x 96" (1.3x10.2x2.4)

DZ3084 Models

Specifications & Capacities

Specifications & Capacities	
Model Numbers	DZ3084
Weight	1345 lbs (610.1 kg)
Hitch type	Skid steer type Universal Quick-Attach, meets ISO 24410
6-Way blade adjustment	Top of hitch plate tilts forward or backward. Blade angles left or right. Blade tilts clockwise or counterclockwise.
Maximum blade angle	30 degrees left and 30 degrees right
Maximum blade tilt	10 degrees clockwise and 10 degrees counterclockwise
Cylinder size	3 1/2" bore x 8" stroke
Maximum hydraulic pressure	3500 psi (24.13 MPa)
Maximum blade cutting width	84" (2.13 m)
At straight across	72 3/4" (1.85 m)
At 30 degree angle	
Moldboard thickness	3/8" (10 mm)
Moldboard height	26 1/2" (67.3 cm)
Pivot bushings	Replaceable and greasable, hardened spring bushings
Pivot pin sizes	Angle pin = 3" x 11 5/8" lg. Pivot pin = 3" x 2 13/16" lg.
Cutting edges	3/4" x 8" x 8 1/2" (1.9 cm x 20.3 cm x 21.6 cm)
End cutting edges	3/4" x 8" x 66" (1.9 cm x 20.3 cm x 1.68 m)
Center cutting edge	
Wear edge	1/2" x 4" x 84" (1.3 cm x 10.2 cm x 2.13 m)



DZ3084 Model