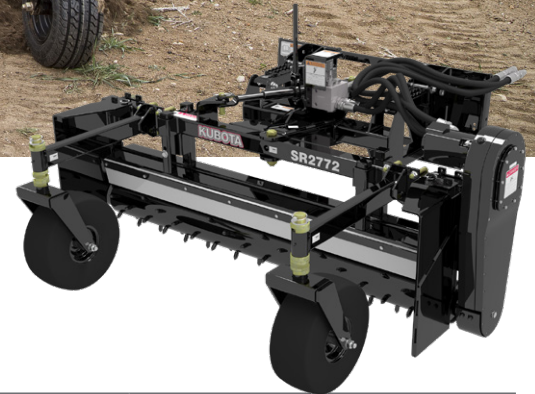


SR/SRF27 POWERED RAKES



AVAILABLE FOR: SSV65 / SSV75 / SVL65-2 / SVL75-2 / SVL95-2s

- SR: Float or rigid option
- SRF: Fixed hitch - no angling
- Manual or hydraulic angle
- Cast chain housing
- Larger U-bolts on gauge wheel
- Carbide tipped studs

Landscapers and housing contractors can prep and level ground for seeding, remove unwanted material and debris, and rejuvenate gravel driveways and lots. Powered rakes make excellent rental tools.



Angle/float hitch: When operated in float, it allows the gauge wheels and rake to float with the contour of the ground.

Carbide tipped studs and bi-directional roller with variable speed enables more complete finish and control.

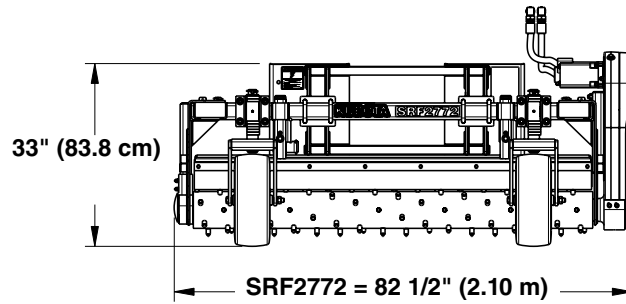
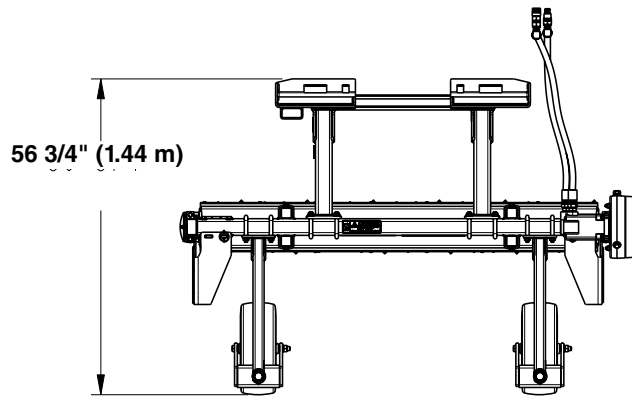


	SR2790	SRF2772	
Hydraulic Flow Requirements (lpm)	15-24 gpm (56.8-90.8)	12-24 gpm (45.4-90.8)	
Hydraulic Pressure Range (MPa)	2250 to 3500 psi (15.51-24.13 MPa)		
Non-Angled Working Width (m)	90" (2.29)	72" (1.83)	
Weight (kg)	1255 (569)	1098 (498)	
Direction of Travel	Bi-directional		
Material Control Blade (cm)	2 Each- 1/2" x 5" (1.3x12.7) urethane		
Spike Roller (cm)	9-3/8" (23.8) Diameter with 3/4" x 1-1/2" (1.9x3.8) carbide tipped studs		
Roller Speed	Variable from 200-350 rpm		
Roller Side Bearings	Roller bearings		
Drive Chain	#50 Double continuous roller chain, high tensile, enclosed in oil bath		
Side Plates	Standard, removeable with storage rack		
Skid Shoes	Replaceable		
OPTIONS			
Hitch	Fixed Hitch	N/A	Standard
	Angle Hitch	Available	N/A
	Angle/Float Hitch	Available	N/A
Angle Actuator for Angling 20° Left or Right	Hydraulically (cm)	2" x 8" (5.08x20.32) Cylinder with solenoid valve	
	Manually	Ratchet jack	N/A

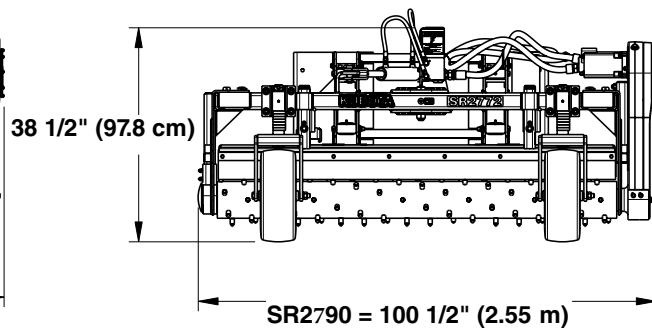
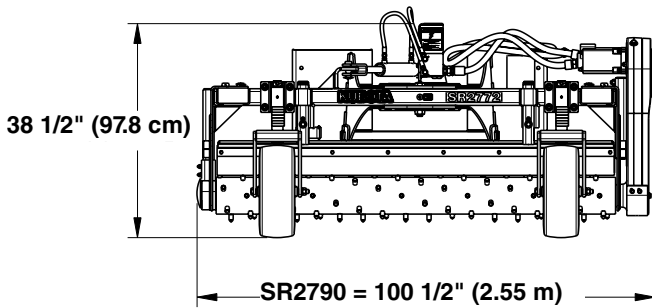
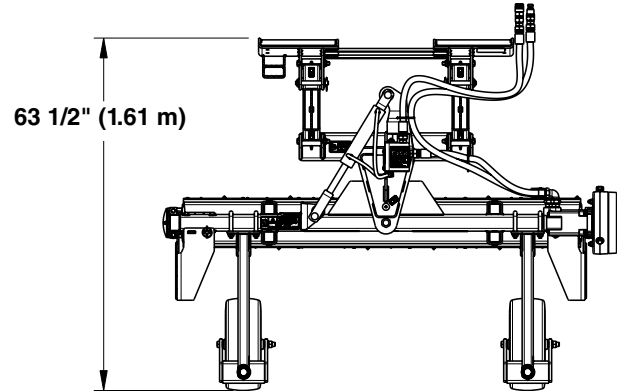
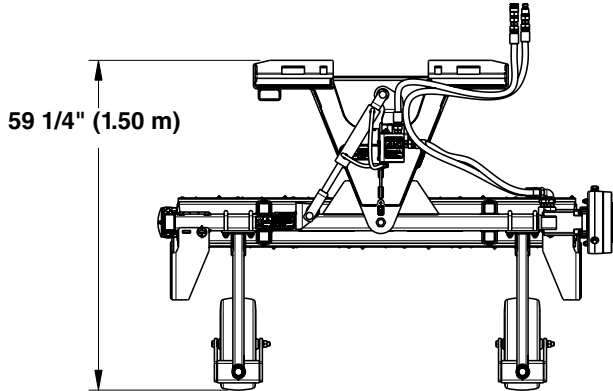
SR27 Series Skid Steer Powered Rakes

Specifications & Capacities			
Model Numbers		SRF2772	SR2790
Hydraulic flow requirements		12 - 24 gpm (45.4 - 90.8 lpm)	15 - 24 gpm (56.8 - 90.8 lpm)
Hydraulic pressure range		2250 to 3500 psi (15.51 to 24.13 MPa)	2250 to 3500 psi (15.51 to 24.13 MPa)
Non-angled working width		72" (1.83 m)	90" (2.29 m)
Angled working width		N/A	84 1/2" (2.15 m)
Overall angled width		N/A	94 1/2" (2.40 m)
Weight without options: With float		N/A	1,119 lbs (507.6 kg)
Without float		867 lbs (393.3 kg)	1,102 lbs (499.9 kg)
Direction of travel		Bi-directional	
Material control blade		2 each - 1/2" x 5" (1.3 cm x 12.7 cm) urethane	
Spike roller		9 3/8" (23.8 cm) Dia. with 3/4" x 1 1/2" (1.9 cm x 3.8 cm) carbide tipped studs	
Roller speed		Variable from 200 - 350 rpm	
Roller side bearings		Roller Bearings	
Drive chain		#50 Double continuous roller chain, high tensile, enclosed in oil bath	
Side plates		Standard, Removable with Storage Rack	
Gauge wheels / depth control		2 Each 16.5" x 6.5" air tires w/ sealant and 3/4" (19 mm) roller bearings and spacer height adjustment	
Skid shoes		Replaceable	
Chaincase lubrication		2 1/2 Pints (1.18 L) of Shell Gadus S2 V220 00 flowable grease or equivalent Part No. 821-045C (32oz. bottle) (946 mL) Add gear lube until it escapes from lower plug hole.	
Options			
Hitch		Standard	N/A
Fixed hitch		N/A	Available
Angle hitch		N/A	Available
Angle/float hitch		N/A	
Angle actuator for angling 20° left & right		Hydraulically Manually	2" x 8" Cylinder with solenoid valve ratchet jack
Wire harness for solenoid hook-up		Kit #323-094A Kit #323-096A Kit #323-097A	14 Pin Connect 2 Pin connect with 2 button switch Battery connect with 2 button switch

39775



With Fixed Hitch Option



With Angle Hitch Option

With Angle/Float Hitch Option